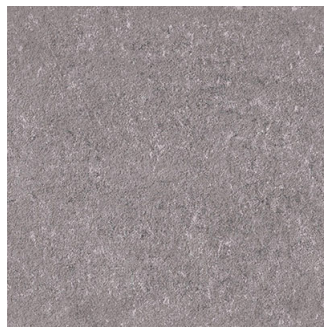




Crust Trikon

Size: 300X300 mm | **Design:** Stone | **Finish:** Satin Matte Finish in Ceramic wall Body | **Series:** Crust New



Front View



Scale View

Packaging Details

Size	No. of tiles in box	Coverege Area	
		sq/mtr	sq/ft
300X300 mm	9.0	0.81	8.72

Technical Specification

WANT TO GET IN TOUCH WITH US?

Toll Free: 1800 266 4826 | Email: marketing@nitco.in