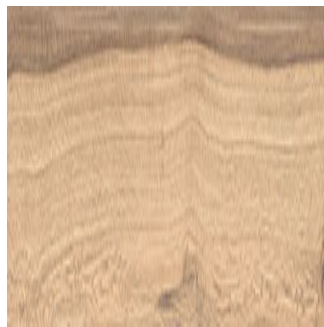




## WD Maple Natura

**Size:** 200X1200 mm | **Design:** Wood | **Finish:** Rustic Finish in Glazed Vitrified Tiles Body | **Series:** Wood Lapatto



Front View



Scale View

### Packaging Details

Size	No. of tiles in box	Coverege Area	
		sq/mtr	sq/ft
200X1200 mm	4.0	0.96	10.33

### Technical Specification

Sr.No.	Test Description	Standard Test Method	ISO 13006 : 2018 E Specification	Nitco's Value	200 mm side
1	Length and Width	ISO 10545-2 / EN 98	± 0.3 % (max +/-1.0 mm)	± 0.08%	± 0.30%
2	Thickness	ISO 10545-2 / EN 98	± 5.0 % (max +/-0.5 mm )	± 5%	
3	Straightness of sides	ISO 10545-2 / EN 98	± 0.3 % (max +/-0.8mm)	± 0.06%	± 0.20%
4	Rectangularity	ISO 10545-2 / EN 98	± 0.3 % (max +/-1.5 mm )	± 0.10%	
	Surface flatness	ISO 10545-2 / EN 98			
5	a. Centre curvature	ISO 10545-2	± 0.4 % ( max +1.8 mm )	± 0.13%	
	b. Edge curvature	ISO 10545-2		± 0.15%	
	c. Warpage	ISO 10545-2		± 0.13%	
6	Surface Quality	ISO 10545-2 / EN 98	95% free from visible defects	> 95% free from visible defects	
7	Water Absorption	ISO 10545-3 / EN 99	< 0.5%, Max 0.6%	< 0.08%	
8	Breaking Strength, N	ISO 10545-4 / EN 100	Min 1300 N	Min. 1300 N	
9	Modulus of Rupture (MOR), N/mm <sup>2</sup>	ISO 10545 -4 / EN 100	> 35	> 35 N	
10	Abrasion Resistance	ISO 10545-7 / EN 154	Report abrasion class and cycles passed	PEI IV	
11	Thermal Shock Resistance	ISO 10545-9 / EN 104	Resistant to 10 cycle	Resistant	
12	Crazing Resistance	ISO 10545-11 / EN 105	No Crazing	Resistant	
13	Resistance to Acids, Alkalies and Chemicals (Except HF Acid)	ISO 10545-13 / EN 106	No Visible effect	No Visible effect	
14	Resistance to staining	ISO 10545-14	Min 3	Min Class 4	

WANT TO GET IN TOUCH WITH US?

Toll Free: 1800 266 4826 | Email: marketing@nitco.in